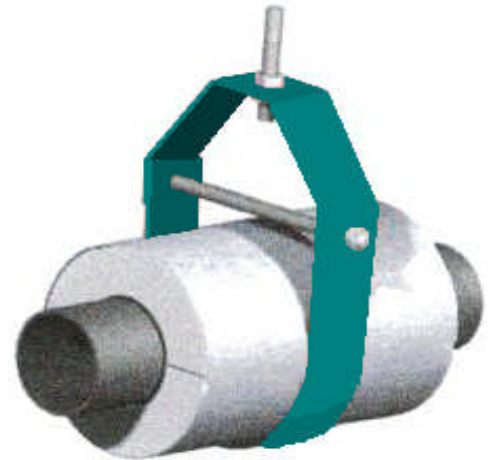


T1000

METAL SAME LENGTH AS CALSIL LENGTH

| METAL GAUGE | | | | | | |
|--------------|----------------------|----|--------|----|--------|----|
| PIPE SIZE | INSULATION THICKNESS | | | | | |
| | 1/2" | 1" | 1 1/2" | 2" | 2 1/2" | 3" |
| 1/2" TO 2" | 24 | 24 | 24 | 24 | 24 | 24 |
| 2 1/2" TO 4" | 20 | 20 | 20 | 20 | 20 | 20 |
| 5" TO 6" | x | 20 | 20 | 20 | 20 | 16 |
| 8" TO 10" | x | 16 | 16 | 16 | 16 | 16 |
| 12" TO 18" | x | 16 | 16 | 16 | 16 | 16 |

| INSULATION LENGTH | | | | | | |
|-------------------|----------------------|----|--------|-----|--------|-----|
| PIPE SIZE | INSULATION THICKNESS | | | | | |
| | 1/2" | 1" | 1 1/2" | 2" | 2 1/2" | 3" |
| 1/2" TO 2" | 4" | 4" | 4" | 4" | 4" | 6" |
| 2 1/2" TO 4" | 6" | 6" | 6" | 6" | 6" | 9" |
| 5" TO 6" | x | 6" | 6" | 6" | 6" | 9" |
| 8" TO 10" | x | 6" | 9" | 9" | 9" | 9" |
| 12" TO 18" | x | 9" | 12" | 12" | 12" | 12" |



| | |
|---|---|
| <p>Application:</p> <p>Model T1000 is designed for use on:</p> <p>*Hot Water *Cold Water *Steam *Chilled Water</p> <p>Intended for installation on: *Band, ring or clevis pipe hanger For flat surface insulation on 6" pipe and up the T-3000 is recommended.</p> <p>Temperature Range: +40F to +1200F</p> | <p>Features:</p> <p>*Easy Installation *Overlapping galvanized sheet metal jacket *Minimizes heat-loss and/or *Minimizes condensation *Copper sizes available *1/2" insulation wall sizes will be made with rigid foam. *On small bore 1/2" insulation thickness and 1/2" copper x 1" Trymer 2000 XP foam insulation will be used.</p> |
| <p>Materials Used:</p> <p>*140+ PSI CALCIUM SILICATE MEETING ASTM C-795, C-533, AND E-84 FLAME SPREAD -0- SMOKE DEVELOPED -0- *3M FASTBOND 49 WATER BASED ADHESIVE COMPLYING WITH NFPA-90A FLAME SPREAD -1.8- SMOKE DEVELOPED -4- G-90 GALVANIZED STEEL SMALL CHECK PER ASTM A-527 FLAME SPREAD -0- SMOKE DEVELOPED -0- *25 PSI TRYMER 2000XP FOAM MEETING ASTM D-1622, D-1621, AND E-84 FLAME SPREAD -25- SMOKE DEVELOPED-50-</p> | |

| Maximum Load RATING (LBS) | |
|---------------------------|------------------|
| Pipe Size | In Clevis Hanger |
| 1/2 | 40 |
| 3/4 | 45 |
| 1 | 65 |
| 1 1/4 | 80 |
| 1 1/2 | 110 |
| 2 | 140 |
| 2 1/2 | 200 |
| 3 | 250 |
| 3 1/2 | 300 |
| 4 | 350 |
| 5 | 450 |
| 6 | 550 |
| 8 | 750 |
| 10 | 1000 |
| 12 | 1200 |
| 14 | 1400 |
| 16 | 1600 |
| 18 | 1800 |