

# SafeLite® Installation Instructions

(Refer to Diagrams Below)

1) For existing ceiling applications, remove ceiling tile from both sides and ends of the light fixture to aid installation otherwise skip to step 2.

2) Install the Peel N Stick pins on a clean fixture top, approximately 6" from each end of a 2' x 4' light fixture or one pin about centered for a 2' x 2' fixture. (see Fig. 3 below)

Note: Position Peel N Stick pins away from the light fixture ballast location.

3) Fold main panel side panels up so SafeLite foil facing meets facing. (Fig. 3)

4) Slide SafeLite through ceiling grid and position over the fixture with main panel foil side up.

5) Fold side panels down to create a 3 sided box. (Fig. 2)

6) Position SafeLite square over the fixture aligning the end of the cover with the end of the fixture and carefully impale onto the mounting pin(s) tucking the side panels inside the grid on both sides of the fixture. (Fig. 4)

7) Carefully slit the SafeLite cover to accommodate grid system and fixture support wires and power cable as needed to install cover.

8) Carefully push insulation lock washer(s) down over mounting pin(s) and snip off excess to prevent injury. (Fig. 5)

9) Position end caps against SafeLite, foil side out, flush with the cover top and edges and secure to cover top panel using straight steel push pin at the center. Secure each cap panel end to the side panel edge with additional steel pins evenly spaced. (Fig. 7)

Note: If shown in the UL design for vented fixtures, carefully cut in ventilation slots consistent with the specific fixture design listings.

10) Replace ceiling tiles that were removed during SafeLite installation.

dal 8/11

# SafeLite® Installation Diagrams

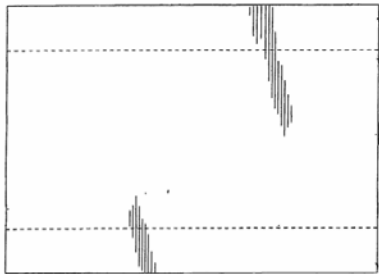


FIG. 1

Fig. 1 A standard SafeLite 2 x 4' light fixture main panel cover. Dashed lines represent V groove mitered corners.

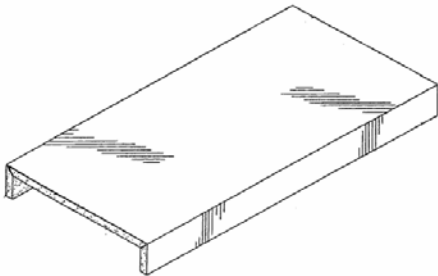


FIG. 2

Fig. 2 SafeLite main panel with side panels folded down.

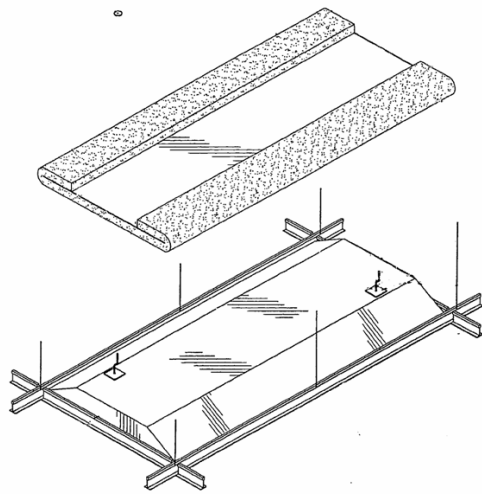


FIG. 3

Fig. 3 End flaps folded back in position over light fixture. Mark and carefully slit for hanger wires and power cable as needed.

Note: Peel N Stick pins applied to diagonal corners of a typical 2' x 4' light fixture

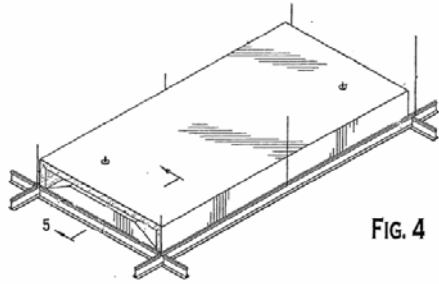


FIG. 4

Fig. 4 SafeLite in position on fixture with end flaps tucked into grid and lock washers secured to fixture anchor pins.

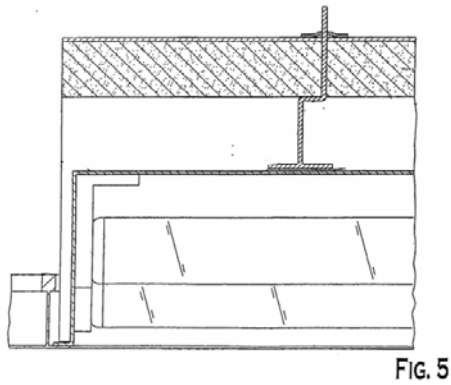


FIG. 5

Fig. 5 Section detail of offset anchor pin, fixture airspace and lock washer. Snip off any excess pin to prevent injury. Note: Figure 8 details alternate spacer pin.

FIG. 6

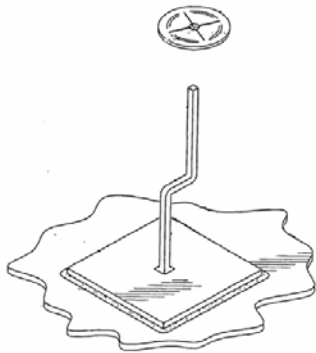


Fig. 6 Detail of offset peel and stick anchor pin and lock washer. Note: Snip off excess pin length to prevent injury (See Fig. 8 for Alt. spacer clip detail).

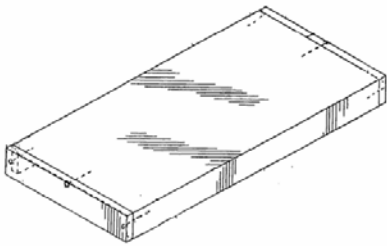


FIG. 7

Fig. 7 Completed installation with end caps installed using 4.5" MC steel pins spaced as shown. **Note:** check the specific UL listing for fixture ventilation opening requirements and carefully cut in as appropriate.

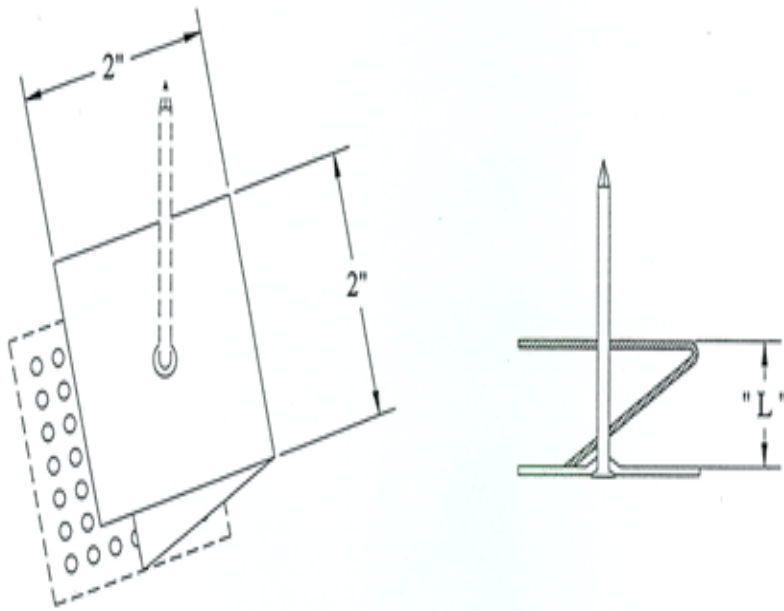


Fig. 8 As an alternate to the offset spacer pin a "V" spacer clip is slipped over a straight stick pin replacing the offset spacer pin to maintain typical 1" airspace.

**SPI recommends first time users consult with the project Architect and the local Building Inspector prior to purchase and installation.**